



AS250 Polyclonal Antibody

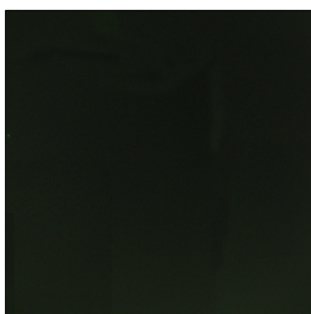
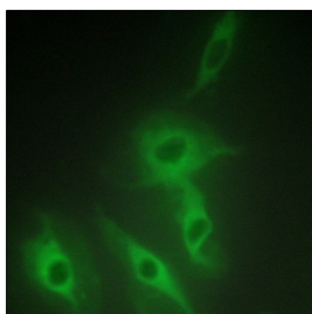
Catalog No	YP-Ab-16142
Isotype	IgG
Reactivity	Human;Mouse
Applications	WB;IHC;IF;ELISA
Gene Name	RALGAPA2
Protein Name	Ral GTPase-activating protein subunit alpha-2
Immunogen	The antiserum was produced against synthesized peptide derived from human AS250. AA range:641-690
Specificity	AS250 Polyclonal Antibody detects endogenous levels of AS250 protein.
Formulation	Liquid in PBS containing 50% glycerol, 0.5% BSA and 0.02% sodium azide.
Source	Polyclonal, Rabbit,IgG
Purification	The antibody was affinity-purified from rabbit antiserum by affinity-chromatography using epitope-specific immunogen.
Dilution	Western Blot: 1/500 - 1/2000. Immunohistochemistry: 1/100 - 1/300. Immunofluorescence: 1/200 - 1/1000. ELISA: 1/10000. Not yet tested in other applications.
Concentration	1 mg/ml
Purity	≥90%
Storage Stability	-20°C/1 year
Synonyms	RALGAPA2; C20orf74; KIAA1272; Ral GTPase-activating protein subunit alpha-2; 250 kDa substrate of Akt; AS250; p220
Observed Band	210kD
Cell Pathway	Cytoplasm .
Tissue Specificity	
Function	regulation of small GTPase mediated signal transduction,
Background	RALGAPA2 (Ral GTPase Activating Protein Catalytic Alpha Subunit 2) is a Protein Coding gene. Among its related pathways are Vesicle-mediated transport and Translocation of GLUT4 to the plasma membrane. GO annotations related to this gene include protein heterodimerization activity and GTPase activator activity. An important paralog of this gene is RAP1GAP.
matters needing attention	Avoid repeated freezing and thawing!



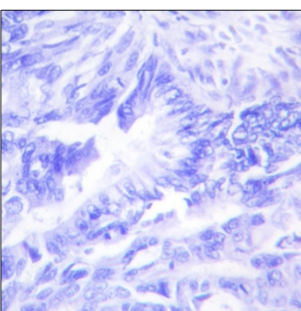
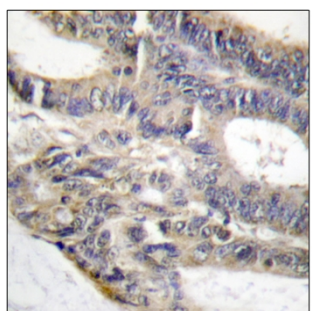
Usage suggestions

This product can be used in immunological reaction related experiments. For more information, please consult technical personnel.

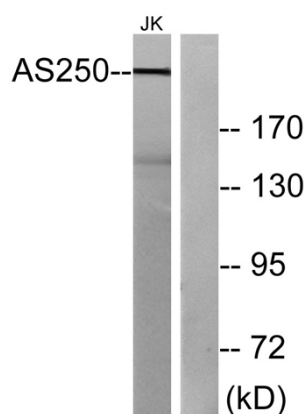
Products Images



Immunofluorescence analysis of HeLa cells, using AS250 Antibody. The picture on the right is blocked with the synthesized peptide.



Immunohistochemistry analysis of paraffin-embedded human colon carcinoma tissue, using AS250 Antibody. The picture on the right is blocked with the synthesized peptide.



Western blot analysis of lysates from Jurkat cells, using AS250 Antibody. The lane on the right is blocked with the synthesized peptide.